



Academy Consultation

Clayton Village Primary School &
Pennine Academies Yorkshire

Parent/Carer Consultation

8 November 2021 – 6 December 2021



Rationale for academy status

- Increased opportunities for joint working across a group of schools - shaping the provision to meet the future needs of our children, families and communities based on a local / collaborative proposal of working together and building on existing strong partnerships and good practice
- To develop the expertise of all staff to further improve effectiveness and outcomes for children
- To offer additional career opportunities for all staff making the Trust more attractive for high performing teachers/support staff
- Reducing Local Authority services
- To generate financial efficiencies to invest back into the classroom



The Proposal

- Clayton Village Primary School to become an Academy and join Pennine Academies Yorkshire
- 5 schools are currently members of Pennine Academies Yorkshire
 - Farnham Primary School
 - Laycock Primary School
 - Hollingwood Primary School
 - Crossley Hall Primary School
 - Grove House Primary School
- Conversion proposed for the 1 April 2022
- Other schools may choose to join the MAT over time
- The school name and uniform and admissions process to remain the same



Why Pennine Academies Yorkshire?

- There is shared vision and ethos between both the Trust and School
- To work with like minded people that understand our community and children
- To enhance the professional development opportunities for staff throughout school
- Many of Clayton Village Primary School's policies, procedures and working practices are aligned with the Trust
- Involvement with the Trust will lead to substantial school improvement both in outcomes, finance and organisation





Who are Pennine Academies Yorkshire



- Pennine Academies Yorkshire (PAY) were formed officially on the 1 May 2018 following 18 months of planning
- Member schools include Farnham Primary, Hollingwood Primary and Laycock Primary with Crossley Hall Primary School and Grove House Primary School joining once the Trust had been formed
- Chief Executive Officer is Michael Thorp
- Chief Finance Officer is Lisa Bradley
- Chair of the Board of Trustees is Nick Briggs



Why did the Trust form



- To achieve the best possible outcomes for children working in partnership with like minded schools and leaders
- To share effective practice
- To divert resources within the group to those who most need it
- To develop future leaders – succession planning
- Facilitate recruitment and retention of staff by offering career and CPD opportunities
- Generate economies of scale



Vision

To develop local hubs of primary excellence to improve schools within and beyond the Trust to impact on the outcomes of young people's lives.

Mission

We are caring and make a positive difference.

We are building the foundations for success.

We are inspiring all to achieve their best.

Care. Build. Inspire...the rest will follow

Core Values

-to exhibit integrity

-to create happiness

-to have compassion

-to be inclusive

-to develop leadership

-to be creative

-to encourage curiosity

-to collaborate



Openness,
transparency,
honesty



High
expectation
for all



Inclusions
and civic
responsibility



Ethical
leadership



Staff and
leadership
development

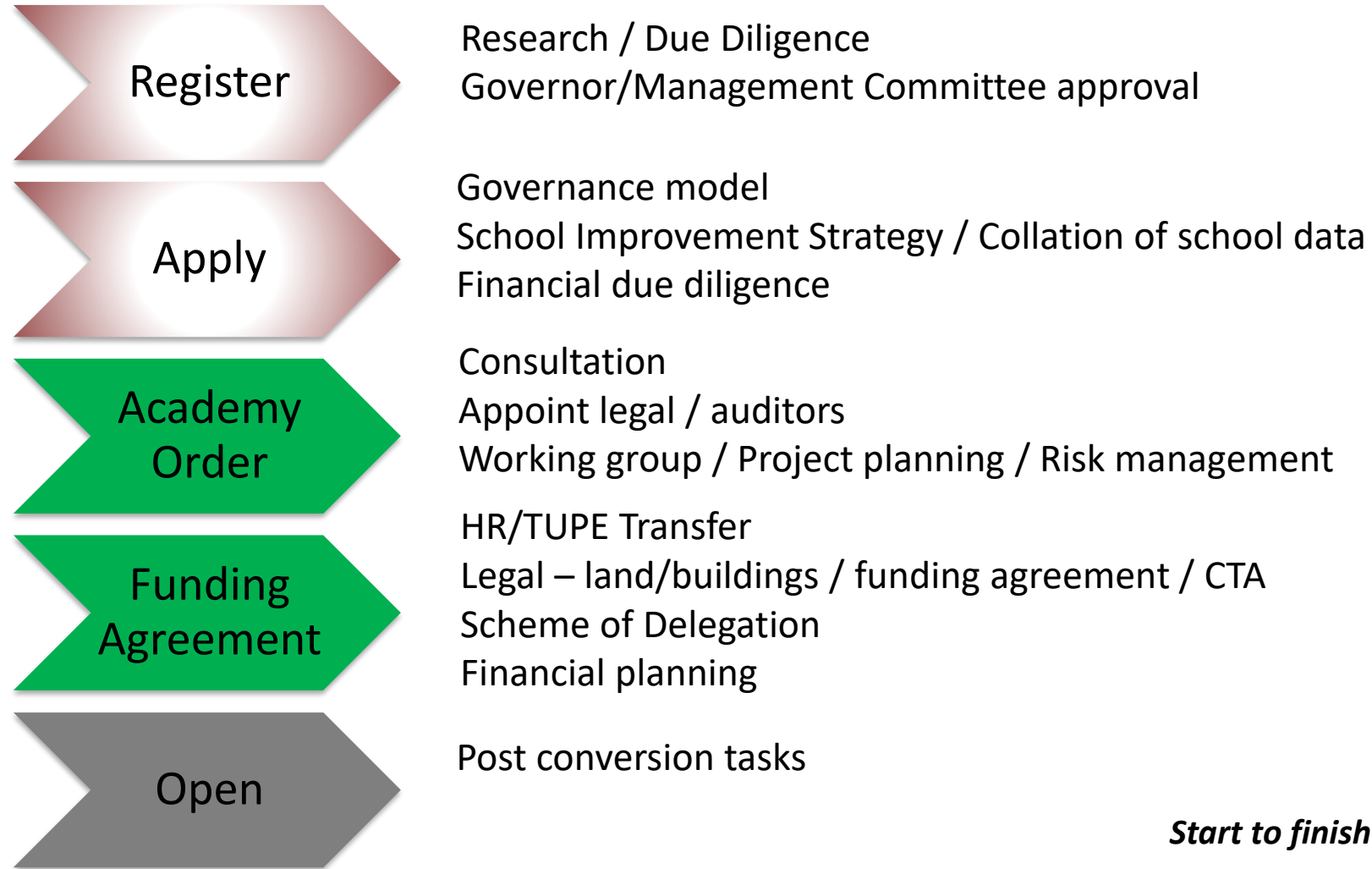


What is an Academy

- Publicly funded independent schools that are not managed by the local authority
- Sponsored and Convertors (Clayton Village is a convertor academy)
- Can set pay and conditions for their staff and also change the length of terms
- Don't have to follow the national curriculum
- Schools cannot acquire or remove their faith character, expand, become mixed or single sex or introduce selection as part of the conversion process

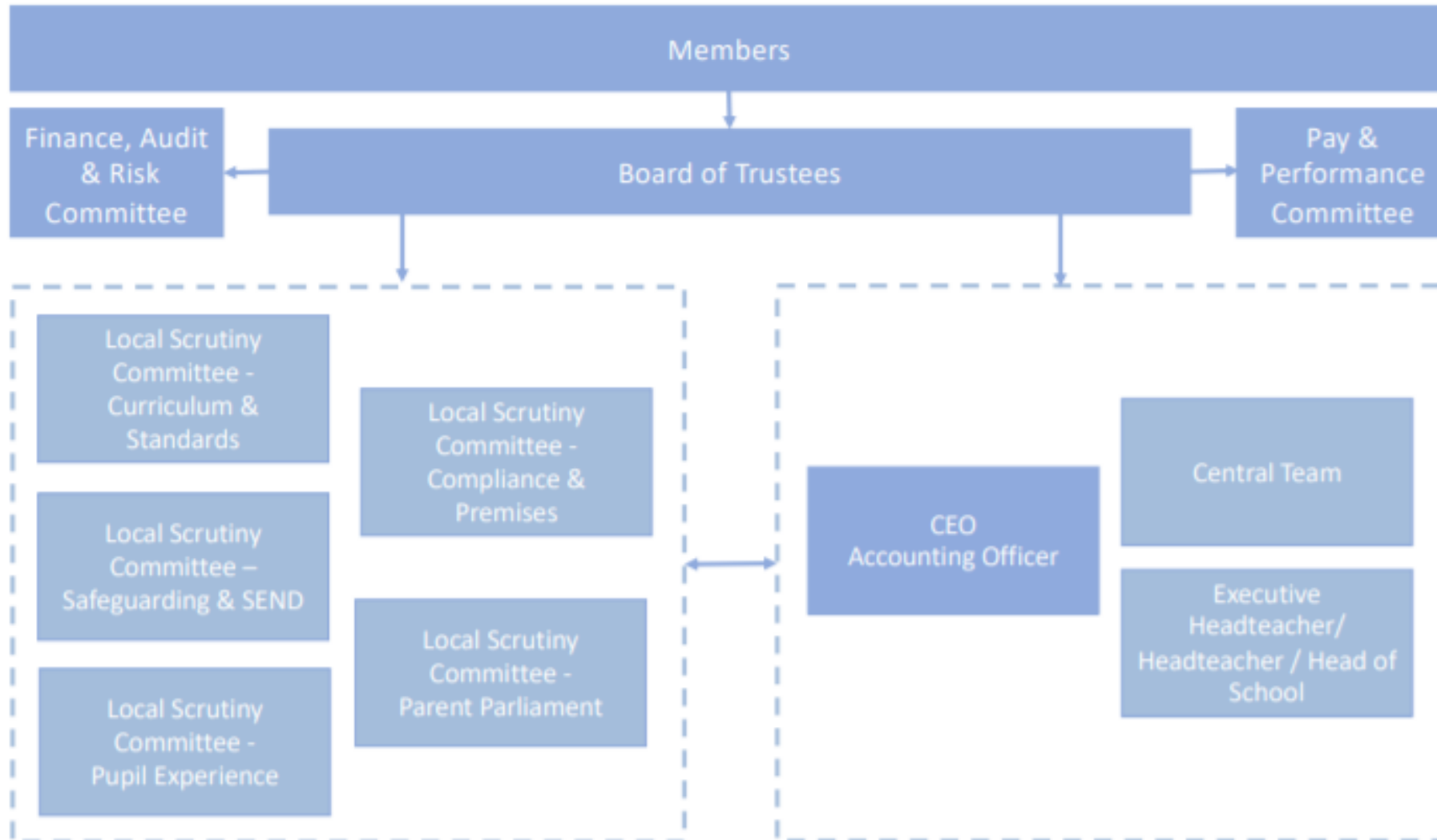


The process for conversion







Start to finish 4-6months

Pennine Academies Yorkshire (PAY) Structure



The Trustees

 <p>Nick Briggs (Chair)</p>	 <p>Brent Fitzpatrick</p>	 <p>Jumaima Iqbal</p>	 <p>Dianne Richardson</p>	 <p>Roger Butterfield</p>	 <p>Hugh Figgess</p>
 <p>Andy Bairstow</p>	 <p>Emma Lister</p>	 <p>Rizwan Rehman</p>	 <p>Scott Crosby</p>	 <p>Deirdre Bailey</p>	



Key questions parents often ask

- Will the school name or uniform change? **No unless there's a compelling reason to change identified in the consultation**
- Will you be changing the school day or holiday times? **No**
- Will my child still have the same teachers? **Yes all staff employed transfer to the academy**
- What will be the benefit to my child(ren)? **See slides 2 & 4**
- Why now & why Pennine? **See letters and earlier slides**



Next Steps



- Formal consultation 8 November 2021 – 6 December 2021
- Academy working group
- Regular communication with staff/parents
- Legal process



Have Your Say



- School website/online survey
- Comments slip on FAQ's
- Email
- Feedback today

Any Questions?

